



GMT MONTHLY MEMBERSHIP PROGRESS REPORT

Results as of: 12/31/2023

Multiple District 17

LOCATION: KANSAS

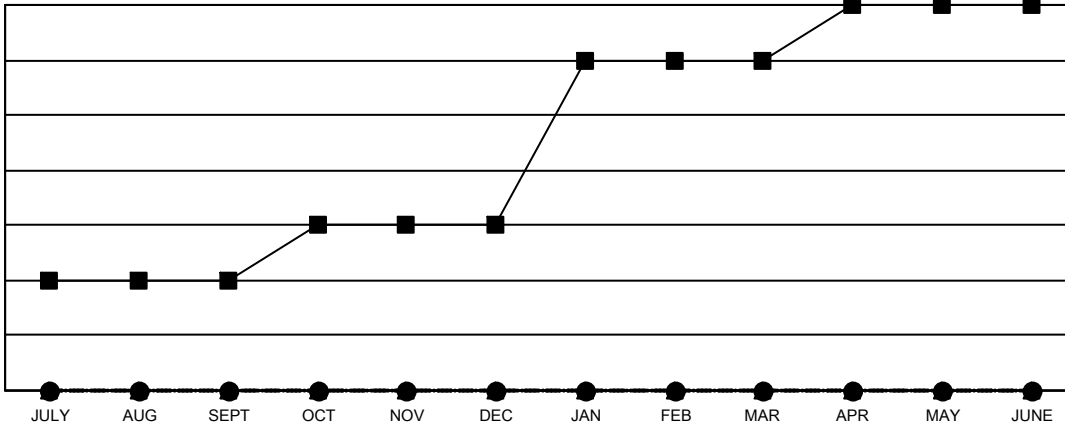
GMT: OPEN

GMT CA 1

Clubs			
RESULTS FOR 2023-2024			
QUARTER	NEW CLUB GOAL	NEW CLUBS	DROPPED CLUBS
JULY/AUG/SEPT	2	0	2
OCT/NOV/DEC	1	0	2
JAN/FEB/MAR	3	0	0
APR/MAY/JUNE	1	0	0

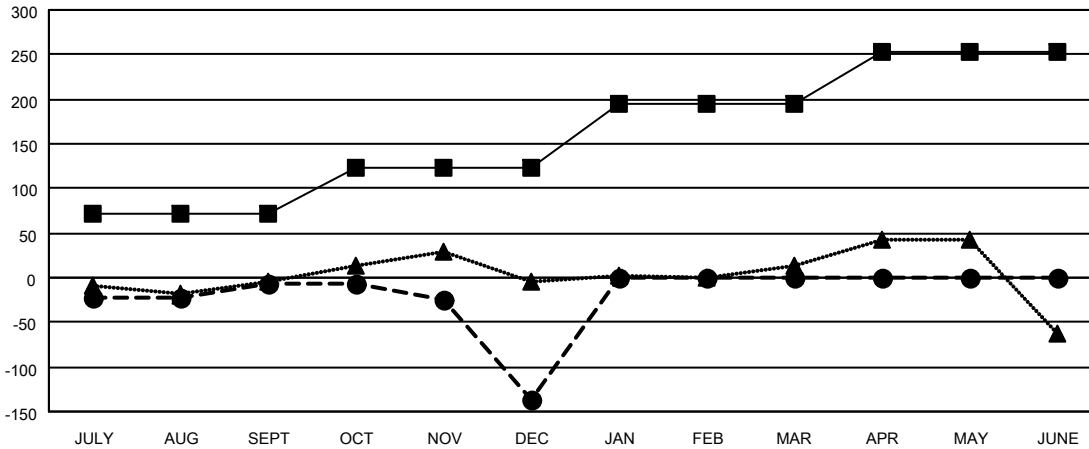
Members			
RESULTS FOR 2023-2024			
QUARTER	MEMBER GROWTH NET GOAL	MEMBER GROWTH ACTUAL	DROPPED MEMBERS ACTUAL (including transfers)
JULY/AUG/SEPT	71	86	87
OCT/NOV/DEC	52	65	190
JAN/FEB/MAR	71	0	0
APR/MAY/JUNE	60	0	0

GOALS AND ACTUAL NEW CLUBS CUMULATIVE



- - CURRENT YEAR GOALS FOR NEW CLUBS
- - CURRENT YEAR ACTUAL NEW CLUBS
- ▲ - LAST YEAR ACTUAL NEW CLUBS

GOALS AND ACTUAL MEMBERS CUMULATIVE



- - MEMBER GROWTH NET GOAL
- - MEMBER GROWTH ACTUAL
- ▲ - LAST YEAR MEMBERSHIP ACTUAL

DROPPED CLUBS: 4	61 CLUBS OF 208 ADDED 1 OR MORE NEW MEMBERS	GENDER DISTRIBUTION
		MALE 2,685 (66.35%)
		FEMALE 1,362 (33.65%)
DROPPED MEMBERS	CLICK HERE FOR CUMULATIVE MEMBERSHIP DATA	TOTAL FAMILY UNIT MEMBERS 880
DECEASED 31		FAMILY MEMBERS PAYING HALF DUES 450
CLUB CANCELLED 14		
OTHER 232		
TOTAL 277		